

# AREMO-4196

The Best Cost-Performance 19" 4U Height Intel® Desktop Mother Board Based Rack-mount Computer



AREMO-4196 and AREMO-4196-MX is 19" 4U Rack-mount chassis and designed for PICMG SBC/SHB and ATX form factor with stylish front panel design, up to 14-slot expansion for PICMG backplane. AREMO-4196 series can support PS/2 PSU, two USB interface on front panel and build with replaceable air filter. AREMO-4196 series is suitable in several vertical markets, like Factory and Server applications.

## FEATURES

- Three 5.25" and one external 3.5" HDD drive bays for RAID 0, 1, 5 & CD-ROM
- Two USB ports on the front panel
- Dual 12cm ball-bearing cooling fans for better ventilation
- Two card retainer positions
- PS/2 or redundant power supply installable
- ATX M/B applicable (AREMO-4196-MX)
- Easily detached and washable air filter
- Equipped with fan control card to detect fan failure

## ORDERING GUIDE

- **AREMO-4196**  
19" 4U rack-mount chassis for PICMG version
- **AREMO-4196/B**  
19" 4U black rack-mount chassis for PICMG version
- **AREMO-4196-MX**  
19" 4U rack-mount chassis for M/B version
- **AREMO-4196-MX/B**  
19" 4U black rack-mount chassis for M/B version

## GENERAL

Construction	Heavy-duty steel with aluminum front panel
Drive Bay	Internal: 5.25" x3, 3.5" HDD x1 Internal: 3.5" x2
Card Retainer	Three locations for one card retainer
Air Filter	Two replaceable air filter
Cooling Fan	Two 12cm ball-bearing cooling fans
Indicator	Power on/off x1, HDD x1
Switch	Power on/off x1, System reset x1
Speaker	One 8Ω speaker
Connector	Two USB ports on the front panel
Standard Color	Silver, Black
Dimension	482(W) x 481(D) x 177(H) mm; 19"(W) x 18.1"(D) x 7"(H)
Weight	Net: 13.5 kg (29.8 lb); Gross: 14.5 kg (32 lb)
Backplane	PBPE-13A8: 14-slot [PCIe (4), PCI (8), PCI-X (0)] active PICMG1.3 backplane PBPE-13A4: 14-slot [PCIe (8), PCI (4), PCI-X (0)] active PICMG1.3 backplane PBPE-12A9: 14-slot [PCIe (2), PCI (9), PCI-X (0)] active PICMG1.3 backplane PBPE-12P4: 14-slot [PCIe (8), PCI (4), PCI-X (0)] PICMG 1.3 backplane PBPE-11A3: 14-slot [PCIe (8), PCI (3), PCI-X (0)] active PICMG1.3 backplane

## POWER SUPPLY

### PLUTO-D3501PJ optional

Maximum output	350W active PFC
Output Voltage & Current	+5V@12A; +12V1@18A; +12V2@18A; +3.3V@18A; -12V@0.3A, +5Vsb@2.5A
Input Voltage	90V ~ 264V AC, full range
Input Frequency	50 ~ 60Hz
Input Current	8A@115V, 8A@230V
Efficiency	> 80%
MTBF	100,000 hrs
EMI & Safety Approval	UL, TUV, CE, FCC, CB, VCCI, 80PLUS
Temperature/Humidity	Operating: 5 ~ 50°C, 20 ~ 85%RH Storage: -40 ~ 70°C, 10 ~ 95%RH
Dimension (WxDxH)	150 x 140 x 86 mm; 5.9" x 5.5" x 3.4"

## ENVIRONMENT

Operating Temperature Range	0 to +55°C
Storage Temperature Range	-20 to +80°C
Relative Humidity	5% to 95%, non-condensing
Vibration	5~7 Hz: 0.5" double amplitude displacement 7~2000 Hz: 1.5g acceleration



# AREMO-4196

The Best Cost-Performance 19" 4U  
Height Intel® Desktop Mother Board  
Based Rack-mount Computer

FEATURE	BENEFITS
■ A lockable front door with thumb lock	■ Good for dust-proof & security
■ One power on/off switch and one system reset button on the front panel behind the lockable door	■ Avoid accidental reset for better running security
■ Fan control board	■ Detect fan fail and Alarm
■ Front replaceable air filter	■ For easy cleaning and install
■ Equipped two USB ports	■ Efficient Access
■ Dual 12cm ball-bearing cooling fans	■ Better ventilation to provide the system with higher reliability
■ Enhanced drive bracket to hold three 5.25" and two 3.5" HDD drives (internal)	■ For integrating varied systems with higher flexibility ■ Suitable for installing RAID and CD-ROM drive
■ Shock-resistant cushion for the drive bracket	■ Suitable for harsh industrial environment
■ Two adjustable positions for hold-down card retainers	■ For fixing all the cards more flexibly and tightly
■ Changeable modularized back panel for 14-slot ISA/PICMG backplane or ATX motherboard	■ Only one minute to change the back panel ■ Easy to change to different backplanes and keep stock
■ Field replaceable power supply bracket for both normal PS/2 power supply and PS/2 type redundant power supply	■ Only three minutes to change the defective power supply ■ Only thirty seconds to change the defective PSU module

## REFINEMENT



PCI based RAID kits, supporting up to three SATA HDDs with RAID 0, 1, 5 selections. The Disk bus is E-IDE with Ultra DMA support. The RAID kits provide a GUI manager for installation and maintenance. Hot-swap and hot-spare capabilities are also supported.



Friendly design of handles, you can lift and unstack AREMO-4196 comfortably and easily.



Power switch, RESET switch, HDD / Power / Fan-fail / LAN LEDs and two USB 2.0 ports are on the front panel.



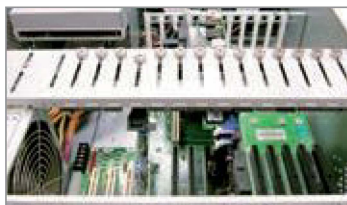
Flexible design to install power supply, the bracket can be adapt to PS/2 type or mini-redundant power supply.



AREMO-4196 enhances the drive bracket to integrate up to three 5.25" and one 3.5" disk drives within a limited space. (extra two 3.5" HDD drives for AREMO-4196-MX)



Equipped with dual 12cm ball bearing fans, AREMO-4196 provides the best ventilation up to 208CFM to expire heat from the system.



AREMO-4196 adopts the newly designed card retainer to hold both the PCI and ISA type add-on-cards more tightly.



AREMO-4196 is equipped with two USB 2.0 connectors on the front panel to have a better security control.



The washable fan filter can be easily taken off to make an easier maintenance.



LED indicators include power, HDD, Fan-fail and LAN functions.



The thumb lock offers easy operation. Users can choose to lock it or not.



The washable fan filter can be easily taken out for easier maintenance.



# AREMO-4196

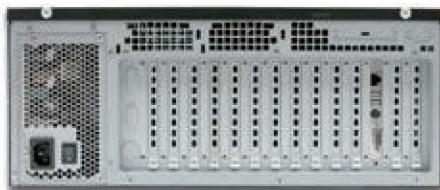
The Best Cost-Performance 19" 4U  
Height Intel® Desktop Mother Board  
Based Rack-mount Computer



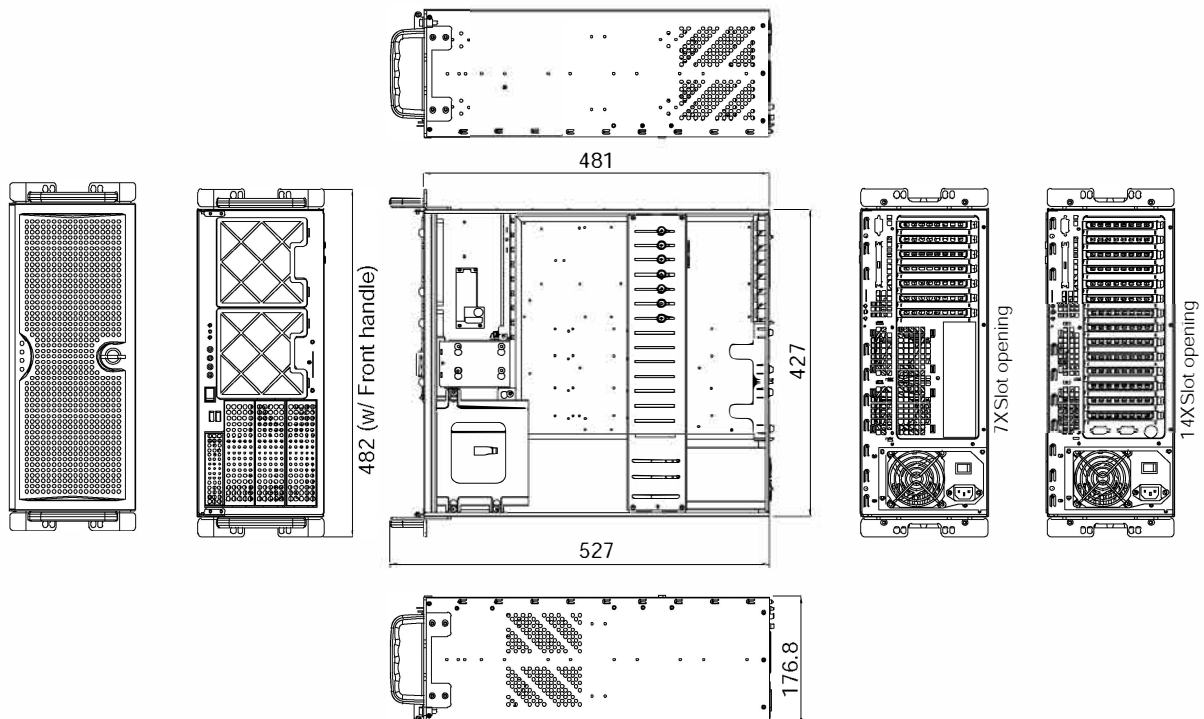
AREMO-4196



AREMO-4196-MX



## MECHANICAL DRAWING



Unit: mm