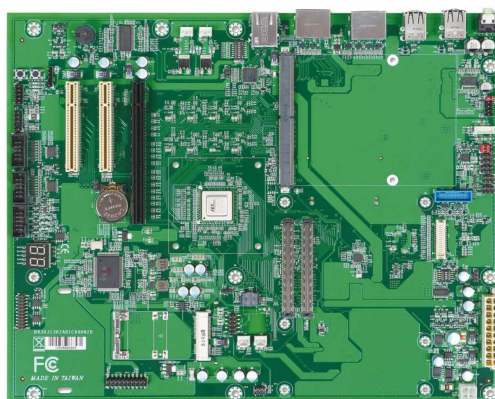




# MEDM-C600

ATX Form Factor Evaluation Carrier Board  
for COM EXPRESS Rev. 2.0 Type 6 Module.  
MEDM-C600 is suitable for Intel® and AMD  
COM module



MEDM-C600 ATX carrier board is development platforms that enable medical customers to begin development on an application specific design with Portwell COM Express module quickly and easily. The MEDM-C600 provides a wide range connectivity for prototype and development ease and flexibility.

## FEATURES

- COM Express® carrier board is compatible with Portwell Type 6 COM Express® modules.
- PCI Expressx16 and MXM 3.0 Type B options for GPU in medical image application
- Front panel support (power button, reset button, power LED and HD Activity LED)
- Support 6W speaker@4ohm

### General

Display Interface	2x DDI Interface (HDMI/DP) 1x DDI interface for LVDS Dual channel LVDS 24bit
Storage	1x SATA 7+15 pin 1x CFast card
Audio	HDA Codec: TLV320 1x Pin header: Line-In, Line-Out and MIC
LAN	1x Gigabit Ethernet connector on Pin Header /Intel® i211AT 1x Gigabit Ethernet connector on Rear IO/Intel i211AT
Rear I/O	1x Audio Jack 1x RJ45 2x USB2.0 1x HDMI 1x DP 2x DP from MXM signal
Internal I/O	1x LVDS connector, support dual channel 24bit 1x Pin header: Line-In, Line-Out and MIC 1x Mini-PCIE slot 1x SMBus header 1x Front Panel header 1x PS2 KB/MS on pin header 1x RS232 on pin header 1x RS485 on pin header 1x USB3.0 on pin header
Extend Slot	IF 1x PCI Express x16 Slot(90°) ELSE MXM Type B from APU. 2x PCI Express x8 slot from PCIe Hub

### Mechanical & Environment

Dimension	304.80 mm x 243.84 mm (12" x 9.6")
Power Input	ATX power
Environment	Storage Temperature: -40°C ~ 85°C Operating temperature: 0°C ~ 60°C with passive cooling Operation Humidity: 5% ~ 95%, non-condensing RoHS compliant
ESD	Contact: +/- 8KV, at least 6KV Air: +/- 15KV, at least 8KV
EMI Certification	CE FCC Class B