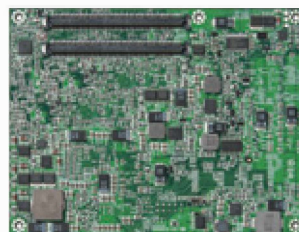
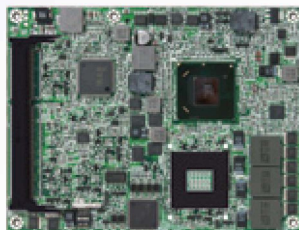


# PCOM-B637VG

The desktop CPU SKU on module is a brand new idea which has never been seen in the market. It's perfect for 1U network system. High-end server can handle more business and information. Multiple-Processors, Hardware-base Raid & Remote control functions are always in high-end server.



6<sup>th</sup> Generation Intel® Core™ Processor based on Type VI COM Express module with DDR4 SDRAM, VGA, LVDS, Gigabit Ethernet, SATA 3.0 and USB

PCOM-B637VG brings three important factors, DDR4 memory support, Gen 3 PCIe support, and 30% faster graphic performance. The DDR4 is trend and it supports both ECC and Non-ECC with the same pin definition. In other words, customer can use both ECC and Non-ECC memories depending their application and demand. In order to achieve that, all the PCH SKUs are considered in development stage to make sure that customer has various models to meet different requirements in cost, performance, and memory type. The Gen 3 PCIe support provides faster PCIe speed so that the performance of PCIe expansion card will be better. It is crucial for Networking and Medical related applications. The enhanced graphic performance brings 4K support.

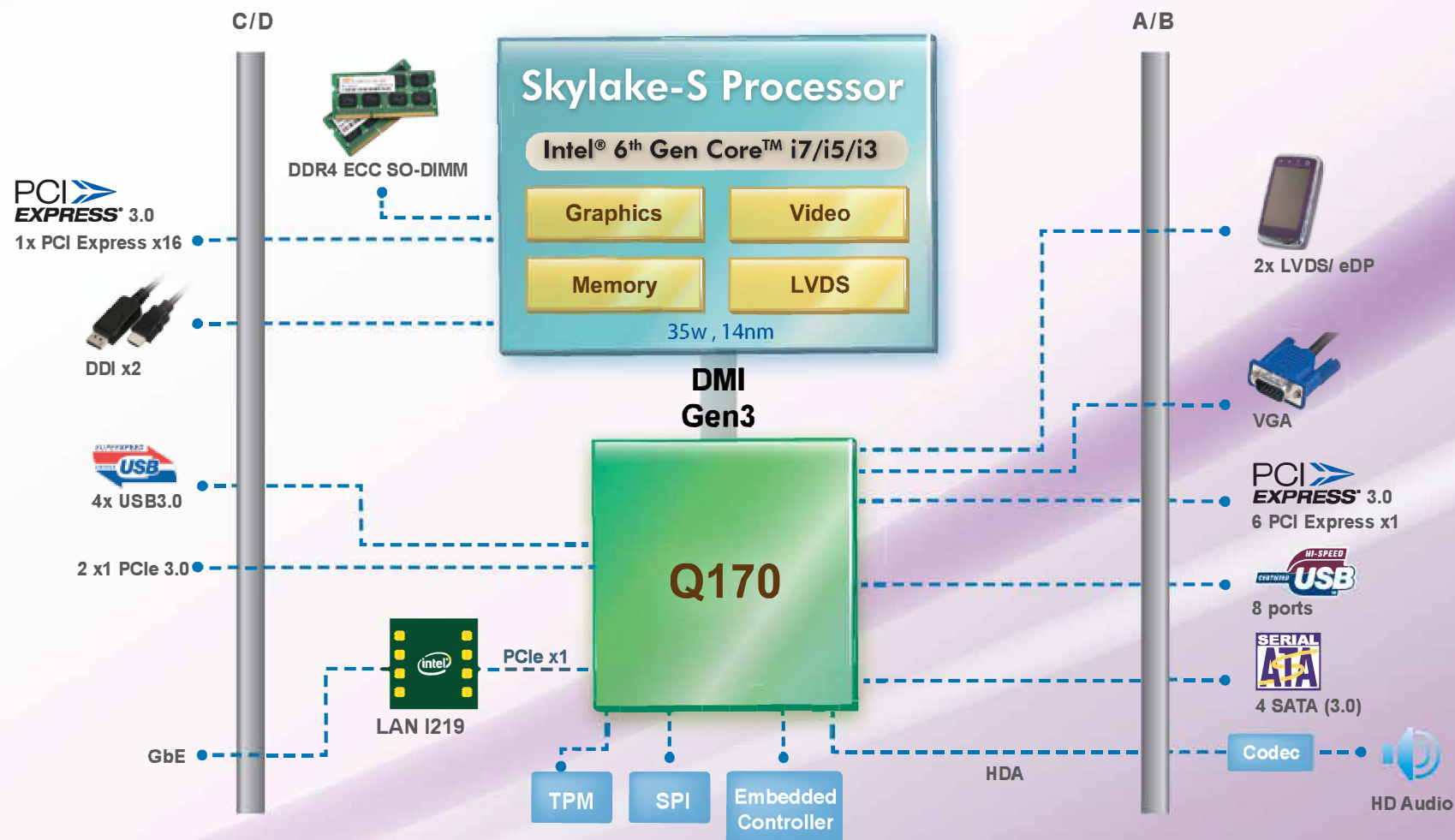
## FEATURES

- Skylake-S is the 6<sup>th</sup> Generation Intel® Core™ Processor with 14nm and brand new architecture provide more performance.
- Seek for low profile solution but with high performance and low cost
- Support faster I/O interfaces on eight PCI Express Gen3 lanes (four x 1 can be configured to one x4 lane)

## ORDERING GUIDE

Contact us

PCOM-B637VG.TYPE VI.Skylake-S.Basic Form  
Factor.Com Express Module.ECC/Non-ECC.DDR4



### Processor Core

- ◆ Skylake-S is the 6<sup>th</sup> Generation Intel® Core™ Processor with 14nm
- ◆ Turbo mode
- ◆ SMT: 4~8 threads/core

### Highlights

- ◆ DDR 4 memory support
- ◆ Gen 3 PCIe support 1x 16, 2 x8, 1x4 configuration

### Memory

- ◆ DDR4-2133
- ◆ 1 channel
- ◆ up to 16GB in 1 SO-DIMM

### Platform Thermal Design Power

CPU	i3/i5/i7 35W	i3/i5/i7 35W	i3/i5/i7 35W
PCH	C236 5.8W	Q170 5.8W	H110 5.8W
Watt	40.8W	40.8W	40.8W