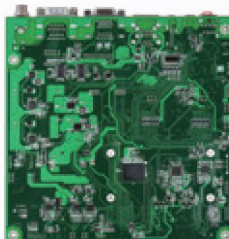
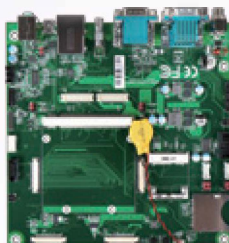


# PQ7-C100ARM

Besides original Q7 feature, Q7 Plus function with extra 80-pin enables customers to enhance expansion possibility..



## Mini-ITX Form Factor Carrier Board for Qseven Module with GbE, HDMI, VGA and dual LVDS

Portwell's PQ7-C100ARM carrier board is designed with Qseven 230 pins card edge MXM connector, suitable for initial evaluation testing of PQ7-M640F. It can help save valuable customers' precious development time to market because the following effort has been made by Portwell.

- Porting Ready as Development Kit to Serve Prior Evaluation Purpose
  - OS ( Linux 3.x / Android 4.x )
  - BSP Ready
  - Middleware Qt5 Ready
- Saving Development Time at least 6~8 weeks

### FEATURES

- Mini-ITX form factor for embedded applications
- Plus with extra 80-pin on PQ7-C100ARM for expansion purpose: 3x UART, 2x I2C, 1x Keypad, 1x CAN bus, interfaces of 1x RGB parallel LCD, 1x MIPI-DSI, 2x MIPI-CSI for camera, 1x SPDIF, and PWM.

### ORDERING GUIDE

AB9-3243Z

PQ7-C100ARM, Mini-ITX, Qseven Carrier Board







**QSeven+**

MIPI CSI/ DSI

Camera Parallel

JTAG

I<sup>2</sup>C

SPDIF

LCD 24-bit

**PQ7-C100ARM**

**MXM Conector  
Gold Finger**

RGMI

GPIO

USB OTG (2.0)

PCI EXPRESS PCIe x1

SATA II x1

SDIO x2

NanD Flash

HDMI x1

UART x1

LVDS x2

CANbus X1