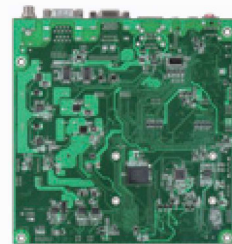
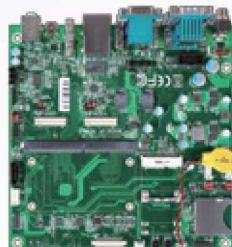


PSMC-C300ARM

The pin-out of PSMRC-C300ARM is optimized for the features specifically common to ARM processors. The modular approach allows scalability, fast time to market and upgradability while still maintaining low power and cost performance.



Mini-ITX Form Factor Carrier Board for SMARC Module with GbE, HDMI, VGA and dual LVDS

Portwell's PSMC-C300ARM carrier board is designed with SMARC 314 pins card edge MXM connector, suitable for initial evaluation testing of PSMC-M640F and PSMC-M310T. It can help save valuable customers' precious development time to market because the following effort has been made by Portwell.

- Porting Ready as Development Kit to Serve Prior Evaluation Purpose
 - OS (Linux 3.x / Android 4.x)
 - BSP Ready
 - Middleware Qt5 Ready
- Saving Development Time at least 6~8 weeks

FEATURES

- Mini-ITX form factor for embedded applications
- Multiple Display interfaces
- MIPI (DSI, CSI) interface for camera is reserved

ORDERING GUIDE

Contact us	PSMC-C300ARM, Mini-ITX, SMARC Carrier Board
------------	---



USB 2.0



Giga LAN



Watch DOG



HW Monitor



GPIO



