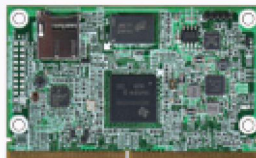
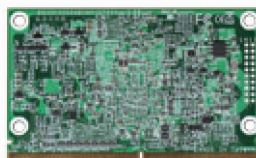


# PSMC-M310T

To save valuable customers' development time to market, not only the RISC-based boards, but also the following ECO system which Portwell can provide should be taken into consideration: full functions of CPU Module + Carrier board, ready BSP for Android 4.0 & Linux 3.0.x, QT5, Middleware and advanced Utility (Diagnostic Tool) supported.



PSMC-M310T is design as CPU module series with SMARC form factor. It is based on embedded TI™ AM3354 Single-core processor, an ARM® Cortex®-A8 processor. Best cost-effective entry model to replace original markets of ARM9 and ARM11.



The SMARC ("Smart Mobility ARChitecture"), small form factor of lower power, cost concern, and high performance, is used as building blocks for portable and stationary embedded systems. The SMARC pin-out is optimized for the features common to ARM CPUs and not common to the x86 PC world. The modular approach allows scalability, fast time to market and upgradability while still maintaining cost performance, low power and small physical size.

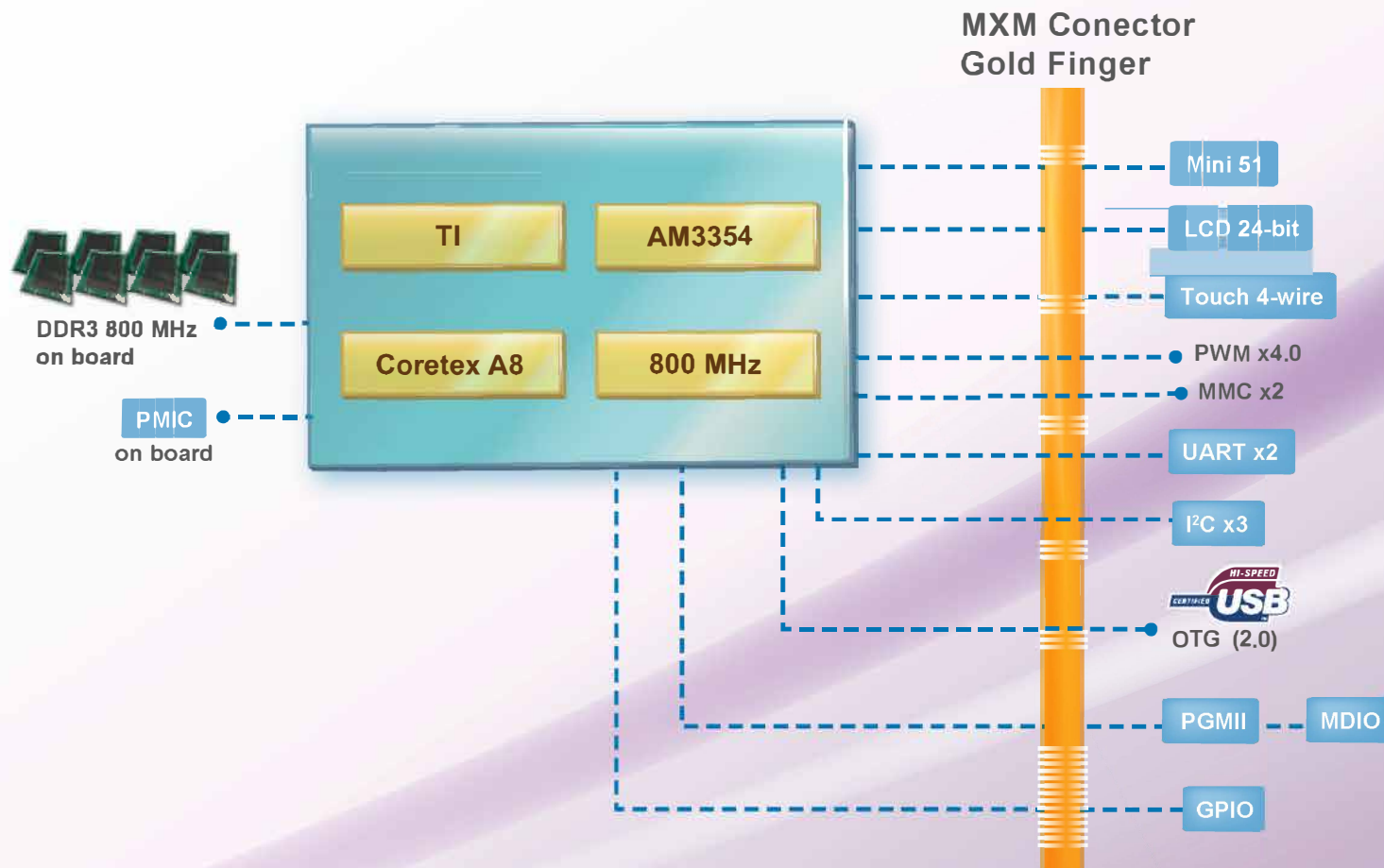
## FEATURES

- Ultra low power consumption: < 2W
- Longevity support more than 10 years
- Higher C/P ratio
- Support SMARC 1.0
- Built-in H/W Graphics accelerators, Open GL ES1.1 & 2.0, Open VG and OpenMax supported
- Portwell ARM ECO system to save customers' development time to market.

## ORDERING GUIDE

Contact us	PSMC-M310T CPU Module board (Single core)
Contact us	PSMC-C300ARM I/O carrier board





### Processor Core

- ◆ TI™ AM3354, ARM™ Cortex-A8, Single core processor

### Highlights

- ◆ More than 10 years longevity support
- ◆ Ultra low power lower than 2W
- ◆ Low Profile

### Memory

- ◆ Onboard DDR3 512MB support

### Platform Thermal Design Power

CPU

TI™ AM3354  
2W